

RODENSTOCK Instruments



Making analysis
fashionable

FundusScope

Non-mydriatic
Fundus Camera

The FundusScope: Tune up your business

The formula for success

The FundusScope captures high-resolution images of the retina with a focus on usability and patient comfort.



”

The FundusScope harmonises perfectly with my AI screening software provider.

“

What's your benefit?

Be competitive and provide added value compared to online stores and competitors.



Patient-friendly

Non-mydriotic, does not require pupil dilation



Added value

Offer new services and increase customer frequency



Competency

Gain more expertise in the field of vision screening



Easy-to-operate

Fully automatic focusing and image capturing



Time saving

Take one fundus image within approximately 15 seconds



Stand-alone

All-in-one fundus camera with built-in computer



Taking fundus images has never been easier, **without compromising the quality of images.**

Take advantage of the FundusScope non-mydriotic fundus camera – offer your customers an additional service and set yourself apart from your competitors.

Your digital partner in consulting.

Outstanding features



Field of view

The field of view of 45° can be extended up to 80°

Fixation

Change the region of interest by choosing one out of ten fixation points

Image capturing

Automatic eye tracking, autofocus and autoshot

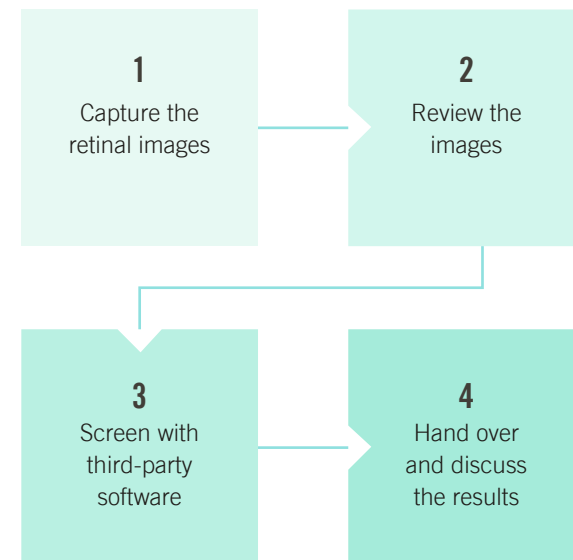
Image quality

The 12-megapixel sensor and the LED flash captures high-resolution images

User interface

Image taking and reviewing is very user-friendly by using the 10.1" touch panel

Thanks to the perfect integration of third-party AI-based screening software, the FundusScope is the right tool for the screening of AMD, diabetic retinopathy and glaucoma.



Specifications

FEATURES AND FUNCTIONS

Type	Digital non-mydratric retina camera
Type of photography	Colour, digital red-free, anterior eye image
Light source	Observation light source: Infrared LED Flash light source: White LED
Auto exposure	YES
Autofocusing	YES
Image	12 MP
Image resolution	4096 × 3072
Alignment	Fully automatic 3D tracking
Chin rest	Motorised

MEASUREMENT

Field of view	45° × 45° up to 80°
Minimum pupil size	4 mm
Working distance	25 mm
Focus adjustment range	-15D to +10D (without compensation lens) -30D to +30D (with compensation lens)
Flash intensity	10 levels, can be set manually
Eye fixation	10 internal points

NETWORKING CAPABILITY

Interface	USB 2.0, Ethernet, HDMI, WI-FI
Image format	JPEG, PNG, DICOM, BMP

OPERATING ENVIRONMENT

Temperature	10°C to 35°C
Humidity	30% to 90% (no condensation)

DIMENSIONS & ELECTRICAL REQUIREMENTS

Dimensions WDH	282 × 485 × 492 mm
Weight	17 kg
Voltage	100 to 240 VAC
Frequency	50/60 Hz
Power consumption	< 150 W

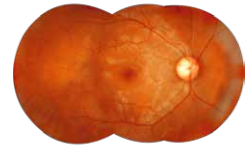
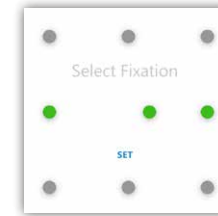


CONCERN-ENERGOMASH

"Concern-Energomash CJSC
26/8 Azatutyan ave., Yerevan, Armenia
Tel.: +374 (11) 878717
Mob.: +374 (44) 494540
info@c-e.am | www.c-e.am

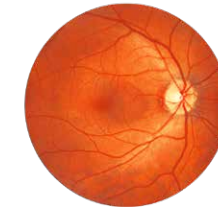
Multi-imaging display

For multi-imaging you have the possibility to select up to three out of nine fixation points. The field of view will extend up to 80°.

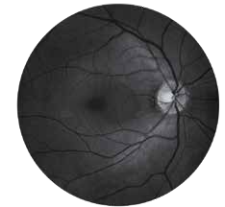


Capture and review options

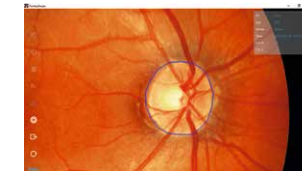
The FundusScope software offers various display and filter options. Performing cup-to-disc measurement or pinching to zoom for more detail are just two of the possibilities.



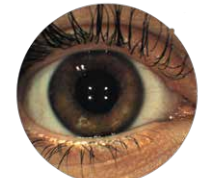
Colour fundus image



Digital red-free filter



Cup-to-disc measurement



Corneal image

Connectivity

The FundusScope is very flexible in its connection. It is equipped with USB, LAN, WI-FI and HDMI interfaces.



USB



LAN



WI-FI



HDMI

